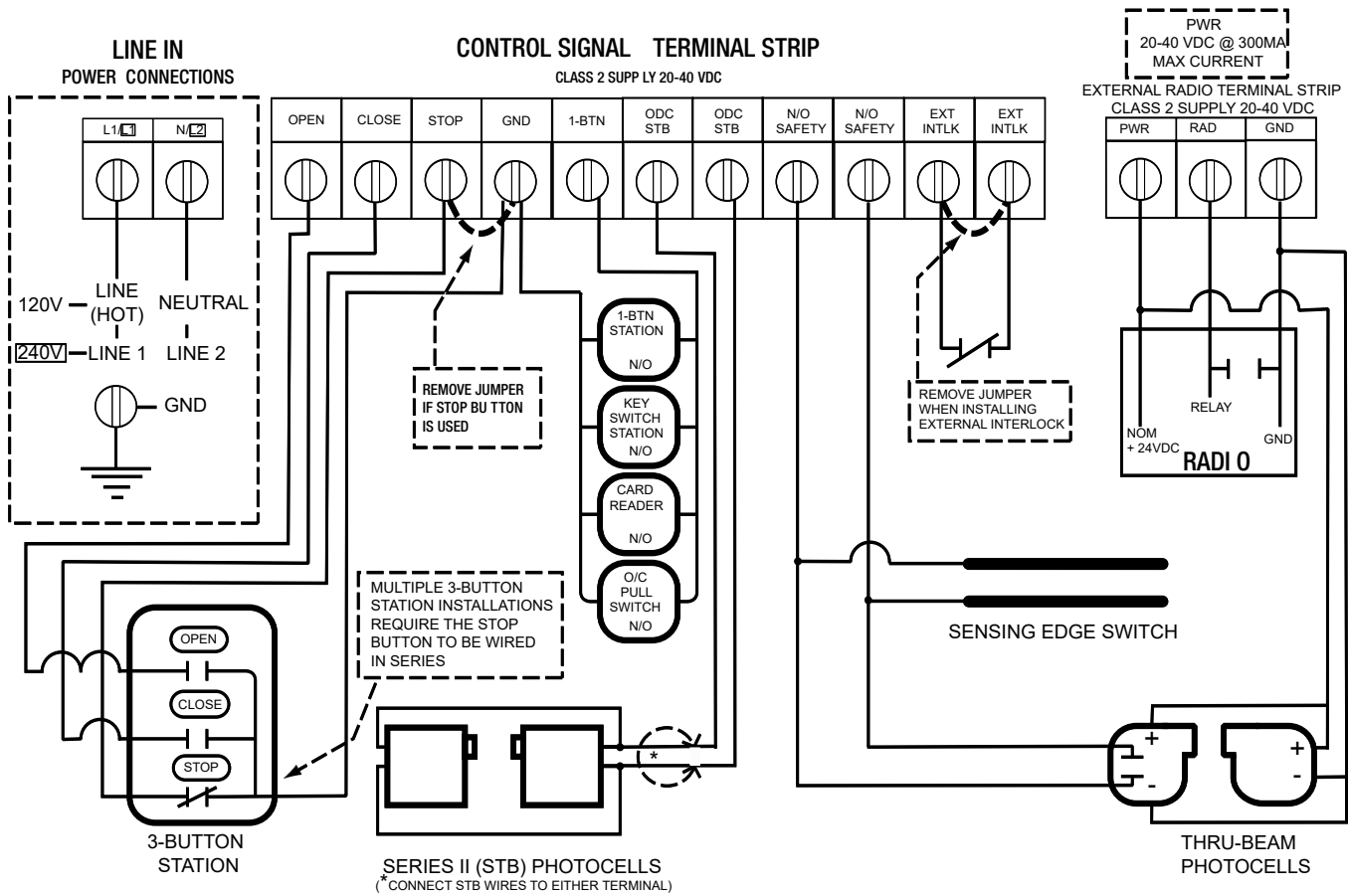


NOT FOR RESIDENTIAL USE



TROUBLESHOOTING LEDS

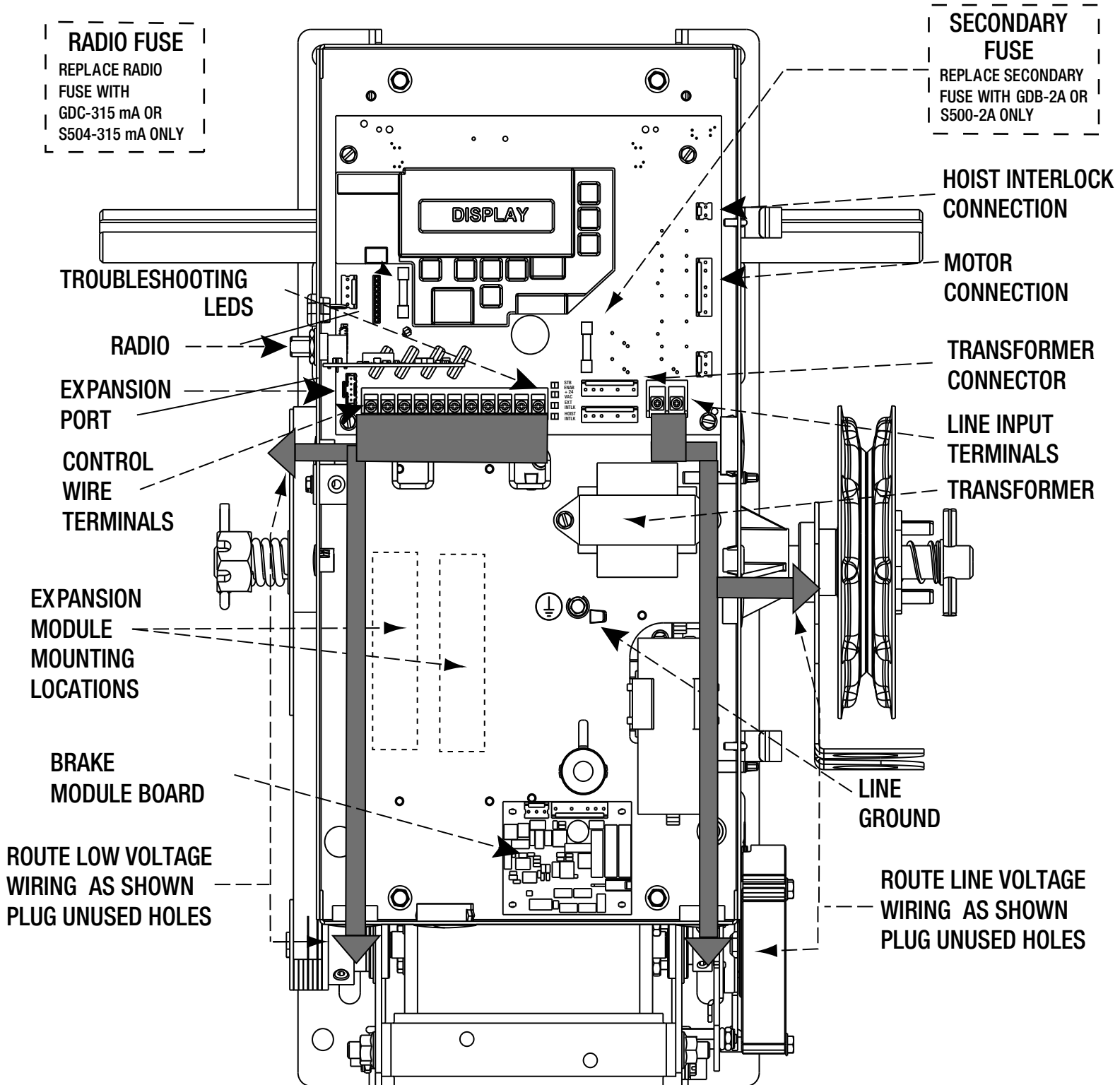
| HOIST INTERLOCK | EXTERNAL INTERLOCK | 24 VOLTS DC | STB ENABLE | INDICATION |
|-----------------|--------------------|-------------|------------|---|
| | | | ● | STB DISABLED OR STB WIRING SHORT |
| | | | ○ ON | STB ENABLED |
| ○ ON | ○ ON | ○ ON | | NORMAL OPERATING CONDITION |
| ● | ○ ON | ○ ON | | HOIST INTERLOCK SWITCH OPEN: 1.) HOIST RELEASE NEEDS RESET. 2.) HOIST INTERLOCK CONNECTOR NOT PLUGGED IN. 3.) HOIST INTERLOCK DEFECTIVE. |
| ● | ● | ○ ON | | EXTERNAL INTERLOCK OPEN |
| ● | ● | ● | | POWER SUPPLY PROBLEM: 1.) CHECK AC POWER SUPPLY. 2.) CHECK MAIN POWER FUSE. 3.) CHECK SECONDARY FUSE (2A) |

GCL-MH

MEDIUM-DUTY HOIST OPERATOR

WIRING DIAGRAM

Warning: For continued protection against fire, replace fuses only with the same type and rating.



CAUTION: To prevent the motor protector from tripping, do not exceed 15 cycles of opening and closing per hour. For limited-duty only.



www.GenieCompany.com/commercial

©2022 The Genie Company