

# Model GCL - LDJ/LDT

## Light-Duty Specifications



### PART 1 – GENERAL

#### 1.01 WORK INCLUDED

- A. Provide electric door operator(s) of size and capacity recommended for door(s) as provided by door manufacturer with electric motor and factory pre-wired motor controls, starter, reduction unit, control devices and accessories required for proper operation.

#### 1.02 RELATED WORK

- A. Opening preparation, miscellaneous or structural metal work, access, field electrical wiring, wire conduit, fuses and disconnect switches are in the Scope of Work of other divisions or trades.

#### 1.03 QUALITY ASSURANCE

- A. In accordance with accepted quality assurance guidelines for motor-operated doors, both the door and electric operator shall be manufactured by a single-source producer of door systems.

### PART 2 – PRODUCT

#### 2.01 GENERAL

- A. The electric door operator shall be the Model GCL Light Duty door control system for a (standard lift) (lift clearance), (full-vertical) sectional door and/or (rolling sheet/shutter door) as manufactured by The Genie Company and suitable for the type and size door specified.
- B. The electric operator shall be single phase 120 VAC 60 Hz.
- C. All components to have corrosion resistant coatings.
- D. The operator shall be suited for NEMA ICS 6 Type 1.

#### 2.02 MOTOR

- A. Motor shall be 24 VDC with quick reversing, intermittent duty cycle and automatic reset thermal protection. Motor shall be UL listed.

#### 2.03 REDUCTION

- A. Primary reduction is integrated worm gear in motor and internal chain and sprocket secondary reduction.

#### 2.04 DUTY CYCLE

- A. Duty cycle shall accommodate up to 15 cycles per hour, not exceed 30 cycles per day.

#### 2.05 LIMIT SYSTEM

- A. Push-to-set limit system, magnetic type providing absolute positioning with push to set capability. Limit system shall remain synchronized with the door during manual operation and supply power interruptions.

#### 2.06 CONTROL SYSTEM

- A. Microprocessor based with relay motor controls on single board.
- B. The control system shall feature a delay-on-reverse operating protocol.
- C. The system shall include maximum run timers in both directions of travel that limit motor run time in the event a problem occurs.
- D. It shall include provisions for the connection of a 2-wire monitored photocell system or a 2-wire sensing edge sensor, as well as non-monitored 2-wire sensing edges, photocells, or other entrapment protection devices.
- E. Control action will be constant contact close until a monitored entrapment device is installed, allowing for selection of momentary contact.
- F. The system shall include provisions for connection of single and / or 3-button control systems.
- G. Trolley operators shall include an inherent secondary reversal system.

#### 2.07 MOUNTING

- A. Side mount for sectional doors shall be direct couple on Jackshaft models.
- B. Trolley mounting for sectional doors via drawbar coupling.
- C. Mounting for Rolling Steel doors shall be side mounted (direct couple to door shaft) (wall-mount chain and sprocket coupling to door).

#### 2.08 RELEASE

- A. Pull and hold mechanism with single cable operation and integrated interlock switch.

#### 2.09 SECONDARY REVERSAL

- A. Trolley version only shall include an integral electronic reversing system that will stop and reverse a closing door upon detection of an obstruction and designed to accept an optional external reversing device.
- B. Jackshaft models shall be designed to accept an optional external reversing device.

#### 2.10 ENTRAPMENT PROTECTION

- A. Control system shall have provisions to connect monitored entrapment protection devices such as monitored electric sensing edge, or monitored photo-eye and to provide constant contact close control operation in lieu of such devices, including (photo-eyes) (sensing edges) and/or (light curtains).

#### 2.11 OPTIONAL CONTROL ACCESSORIES

- A. Control accessories: In (lieu of) (addition to) (interior push-button control station) (exterior push-button control station) (interior key switches) (exterior key switches) (radio controls) (Genie monitored photo electric eyes) (commercial phot electric eyes) (floor loops) (motion sensors).
- B. Operator accessories shall be timer to close and programmable mid-stop setting.
- C. Operator accessories shall be Intellicode® radio receiver that is 315 MHz and capable of storing 255 single-button and/or 255 open-close-stop transmitters.

### PART 3 – EXECUTION

#### 3.01 INSTALLATION

The model GCL Light-Duty shall be installed in accordance with The Genie Company instructions and standards. Installation will be by trained and authorized Genie Company distributors or dealers.

©2025 The Genie Company. All Rights Reserved.

A copyright license to reproduce this specification is hereby granted to non-manufacturing architects, engineers and specification writers.

*Note to specifier:*

*This specification is a suggested guide. Available options are shown in parentheses.*

Model GCL – LDJ/LDT  
Light-Duty Specifications



SALES INFORMATION

Job Name: \_\_\_\_\_

Architect: \_\_\_\_\_

Contractor: \_\_\_\_\_

APPLICATION INFORMATION

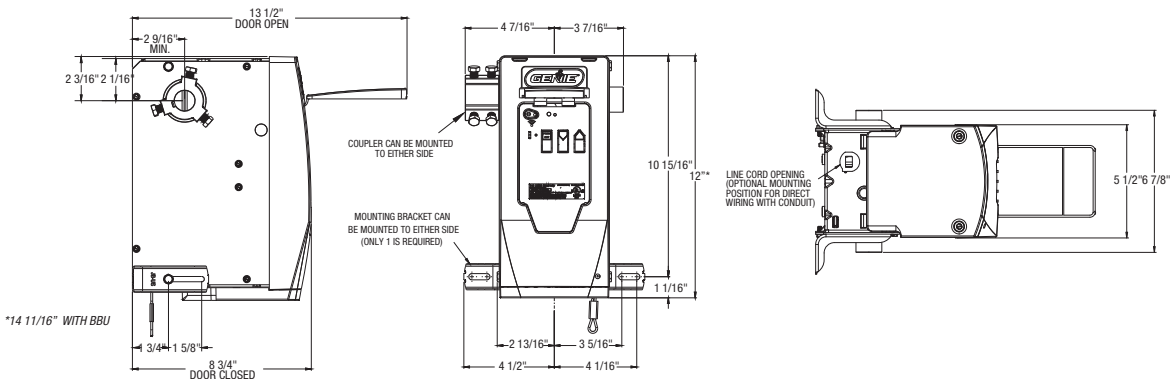
Door Type: \_\_\_\_\_ Door Size - Width: \_\_\_\_\_ Height: \_\_\_\_\_ Drive Side: \_\_\_\_\_

Standard-Duty Model: \_\_\_\_\_ HP: \_\_\_\_\_ Voltage: \_\_\_\_\_ Phase: \_\_\_\_\_ Hertz: \_\_\_\_\_

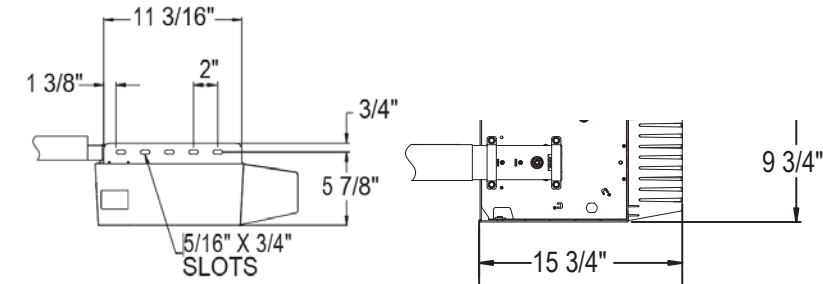
Monitored Entrapment Device: \_\_\_\_\_

DIMENSIONS

GCL-LJ



GCL-LT



Dealer Imprint Area

AMPERAGE RATING - 1 PH 60 Hz	
HP	120 VAC
1/2	4