

# GCL-LT

## LIGHT-DUTY TROLLEY OPERATOR



The GCL-LT is designed for standard-lift sectional doors that have up to a 12-cycle/hour and less than a 30-cycle/day requirement. Designed for reliability with leading innovative features, the light-duty trolley sets a new standard in the industry.

### UL 325 Listed

- Allows for monitored entrapment protection and momentary operation when used with select monitored entrapment devices.
- See back for examples of UL 325 Listed monitored devices.

### GCL-LT Advantages

- Industry's strongest 140 VDC motor.
- Intellicode® dual frequency automatically adjusts between the 315 and 390 MHz to help avoid remote control interference.
- Soft start and stop reduces stress on the door and operator for improved life.
- GenieSense® Monitoring and Diagnostic Technology - Operator force profile detects irregularities in operation of the door to identify unsafe door operation. The force profile is updated every cycle to account for changes in weather and temperature.
- Power on demand gives the operator the ability to adjust output power during key movements of the door's travel to ensure a smooth and consistent movement.
- Smart illumination lighting positions the 2-bulb lighting system towards the inside of the garage instead of at the door for light where its needed.
- Heavy-duty double c-channel rails allow for operation of heavy doors with minimal deflection of the door system.
- Sure-Lock™ Control allows for operator lock out when door operation isn't required. Manually toggled feature on the wired wall console.
- Optional battery backup can be added at anytime.

### Standard Features

- Easy push to set limits.
- UL 325 Listed for commercial and residential.
- Automatic open and close door force settings.
- Pull cord release for emergency manual operation.
- 2-year limited warranty.
- Commercial photocells.
- 7.5 in/sec door speed in both directions in most applications.
- Max door height of 14 ft.
- Standard wired wall console.
- Can store 31 transmitters.

For more information on patents related to this product, visit <https://www.geniecompany.com/patents>.

©2025 The Genie Company | GCL-LT



OFFICIAL GARAGE DOOR  
OPENER  
of the  
Pro Football Hall of Fame



# GCL-LT | LIGHT-DUTY TROLLEY OPERATOR

## MAX DOOR SIZE (SQ\*FT) - SECTIONAL

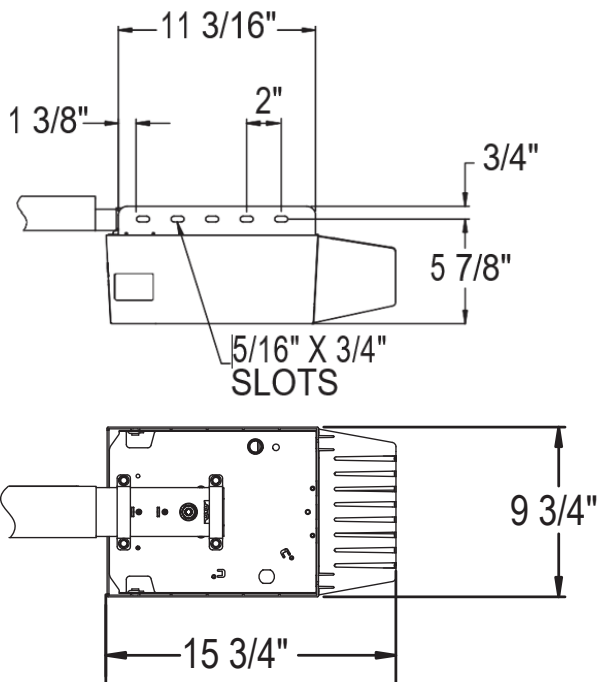
Door Series		Commercial Steel Insulated & Non-Insulated								Thermospan®				ThermoMark™			Aluminum	
		216	216 Ins.	220	220 Ins.	2415	2415 Ins.	2411	2411 Ins.	125	150	200	200-20	530	5150/5155	5200/5255	451/ K-AL	452/ 464 / K-AL
		Flush		Ribbed						Insulated				Insulated				
Model	Max Door Wt. (lbs)	16GA.	16GA. Ins.	20GA. Steel	20GA. Ins.	24GA.	24GA. Ins.	Nominal 24GA.	Nominal 24GA. Ins.	PU-FIP	PU-FIP 1.38"	PU-FIP 2"	PU-FIP 2" 20GA. Ext.	PU-FIP Ins. 3"	PU-FIP Raised Panel 1.38"	PU-FIP Raised Panel 2"	1/8" Glass 1.38"	1/4" or 1/2" Glass 1.38"
140 V DC	750	196	151	196	196	196	196	196	196	196	196	196	196	196	196	196	196	169

Notes: 1. Max Door Weight and not the square footage, is the critical factor in selecting the proper operator.  
2. Max Door Height 24'  
3. For "Commercial Steel Insulated" category, various "backer" options are available. The chart above is based in all cases on the thickest backer available.  
4. "PU-FIP" stands for "polyurethane, foamed-in-place." If no notation is present, insulation is "polystyrene laid-in-place."

## Construction

- **Motor**  
Quiet, powerful 140 VDC with usage-based thermal shutdown.
- **Drive**  
Primary — Integrated worm gear in motor.  
Secondary — Internal chain and sprocket.
- **Emergency Disconnect**  
Draw bar arm disconnection for emergency manual operation.
- **Pre-wired to accept:**  
- Single button control stations.  
- Monitored photoeyes.
- **Amperage Rating**  
120 VAC at 4 A.
- **Power Cord**  
6 ft, three prong power cord.

AMPERAGE RATING 1 PH 60Hz	
HP	120 VAC
1/2	4



## Accessories and Options

- **Battery Backup (P/N: 41590R)**  
Can be easily installed without unmounting the operator.
- **Aladdin Connect® (P/N: 42185R.S)**  
Operate and monitor the door from almost anywhere via a smart device.
- **Wireless Wall Console (P/N: 39902R)**  
The wireless wall console programs like a transmitter with none of the wires of the standard wired wall console. Can be installed anywhere in view of the operator with an included jogger button for a delayed door operation in 10 seconds, 20 seconds, or 30 seconds.
- **Wireless Keypad (P/N: 37224R)**  
Easy-to-use keypad mounts outside the door to allow for access to the door without a remote control. Back-lit keypad allows button presses to be easy to see, and can control up to 3 different operators.
- **UL 325 Approved Reversing Devices**  
The installation of a monitored external entrapment device is required for momentary contact close operation on all commercial door operators. The following devices, when purchased through Genie, are UL Approved for use to meet this requirement:
  - Safe-T-Beam® Photoeye Kit with adjustable bracket (P/N: 38176R.S).<sup>1</sup>
  - Impact-protected Commercial Photoeye Kit (P/N: OPAKPE2.S).
  - Retro-reflective NEMA 4X Photoeye Kit (P/N: OPGAKRPEN4X.S).
  - NEMA 4X Photocells (P/N: OPAKPEN4GX.S).
  - MillerEdge ME/MT/CPT (DC or T3) 2-wire edge sensor. Must be used with TCM (OPABTCGX.S), ESM (OPABESX.S), or Interface Module (OPAKMEIGX.S).
  - Monitored Light Curtains
    - 3 ft. length (P/N: OPAKMLC3.S).
    - 6ft. length (P/N: OPAKMLC6.S).
    - Light curtain mounting brackets (6 total) (P/N: 112809.0001.S).
    - Requires power pack for operation (P/N: 0002278).

<sup>1</sup> — Default device when operator is ordered.



The Genie Company, One Door Drive, Mt. Hope, Ohio 44660

[www.geniecompany.com/commercial](http://www.geniecompany.com/commercial) | 1.800.843.4084

Item G001.0085 Rev. 12/24

© 2025 The Genie Company. Genie, Safe-T-Beam, Intellicode and the Genie logo, are registered trademarks of GMI Holdings, Inc., d/b/a The Genie Company. Consistent with our policy of continuing product improvement, we reserve the right to change product specifications without notice or obligation.